

03.2023



SUBTIL.

fashion alert

#brondehair



#BRONZE HAIR #GOLDEN HOUR HAIR #BRONZING HAIR #COLD BREW HAIR
#MILK TEA HAIR #WET BALAYAGE :



+465 K
posts on INSTAGRAM



+64 M
hits on GOOGLE



+275 K
views on YOUTUBE



+58 M
on TIKTOK

step by step



DEPTH NATURAL LEVEL OF MODEL 6
with a previous balayage on ends

01

HAIR HUMIDIFICATION

Spray hair with water to prep for the "wet balayage" process.

02

SECTIONING OFF ZONES 1-2 AND 3

Pick out hair's natural parting to trace and separate off three circular sections measuring 5 to 7 cm thick (labelled 1-2-3).

03

LIGHTENING & COLORING ZONES 1-2 AND 3

LIGHTENING

General instructions applicable to all three zones: section off strands measuring 10 to 15 centimeters long. Gently backcomb new growth, then apply Mixture N°1 using the balayage technique and the protected method.

ZONE 1: V-shaped balayage technique

ZONE 2: diagonal balayage technique

ZONE 3: hand-painted balayage technique on ends

MIXTURE N°1: 30 g of /BLOND 8-tone lightening powder + 7.5 ml of /XRESCUE + 45 ml of /BLOND 30 VOL. developing cream

"LOW LIGHT" COLOR

Retrace the contour of each circle between the lightened sections over 0.5 to 1 centimeter. Color the mid-lengths and ends with Mixture N°2 using the wrapped method, starting from the first two centimeters of new growth.

MIXTURE N°2: 10 g of /INFINITE 5-71 + 10 g of /INFINITE 8-71 + 20 ml of SUBTIL 5 VOL. oxidant

When an ORANGEY-YELLOW lightening base has been achieved, rinse out and wash using SUBTIL Acid pH shampoo, followed by a suitable conditioner from the BEAUTIST range.

04

SECTIONING OFF ZONES A AND B

ON TOWEL-DRIED HAIR

Zone A: trace and separate off a 2- to 3-centimeter curve at the front hairline.

Zone B: rest of the hair.

05

"SHADOW ROOTS" ON NEW GROWTH IN ZONES A AND B

Start your application with Zone B, finishing off with Zone A.

Zone B: apply Mixture N°3 to the first 5 to 7 centimeters of new growth.

Zone A: apply Mixture N°3 to the first 2 centimeters of new growth.

MIXTURE N°3: 25 g of /LACQUER 7-12 + 10 g of /LACQUER 8-2 + 10 g of /LACQUER 8-8 + 10 g of /LACQUER Clear + 55 ml of SUBTIL 5 VOL. oxidant

06

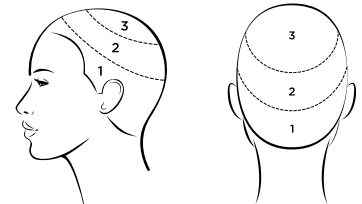
TONING THE LENGTHS AND ENDS

Apply Mixture N°4 to all remaining mid-lengths and ends.

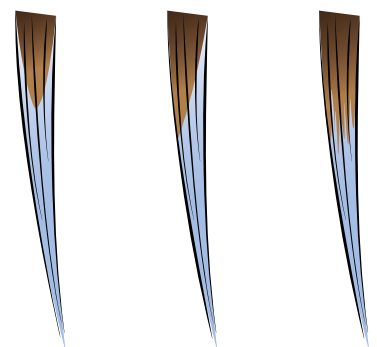
MIXTURE N°4: 20 g of /LACQUER 7-12 + 20 g of /LACQUER 9-8 + 15 g of /LACQUER 10-21 + 5 g of /LACQUER CLEAR + 60 ml of SUBTIL 5 VOL. oxidant

Leave on for 20 minutes (must be monitored), then rinse out and wash hair with SUBTIL Acid pH shampoo, followed by a suitable conditioner from the BEAUTIST range.

SECTIONING OFF ZONES 1-2 AND 3



LIGHTENING & COLORING ZONES 1-2 AND 3

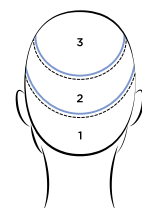


ZONE 1
V-shaped
balayage

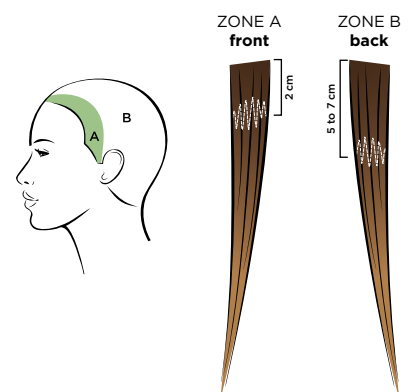
ZONE 2
Diagonal
balayage

ZONE 3
Hand-painted
balayage
technique
on ends

"LOW LIGHT" COLOR



SECTIONING OFF ZONES A AND B "SHADOW ROOTS" ON NEW GROWTH IN ZONES A AND B



ZONE A
front

ZONE B
back

#winehair



#STRAWBERRY BRUNETTE #PAGENTA #CANDY HAIR COLOR #CHERRY HAIR :



+28 K
posts on INSTAGRAM



+18 M
hits on GOOGLE



+320 K
views on YOUTUBE



+105 M
on TIKTOK

step by step



DEPTH LEVEL OF MODEL 5

01

COLORING NEW GROWTH

Color all areas of new growth using Mixture N°1.

MIXTURE N°1: 50 g of /INFINITE 5-26 + 8 g of /MIX TONE Violet + 2 g of /MIX TONE Magenta + 50 ml of SUBTIL 10 VOL. oxidant.

02

SECTIONING OFF ZONES 1-2-3 AND 4

Trace out two curves on either side of the head, starting from the middle of the temples and ending at the nape of the neck (labelled 2 & 3).

Next, trace out a curve starting at the middle of one ear, extending over the middle of the vertex area, and ending at the middle of the other ear. These sections result in zones 1 and 4.

03

LIGHTENING ZONES 1-2-3 AND 4

ZONES 1 & 4: Trace out three to four rectangles measuring 1 centimeter wide and 4 to 5 centimeters long within zones 1 and 4.

Gently backcomb new growth and apply Mixture N°2 using the "painting balayage" technique and the protected method.

(Lateral) ZONES 2 & 3: trace out two to three rectangles measuring 1 centimeter wide and 4 to 5 centimeters long. Proceed with the same backcombing and "painting balayage" techniques used for the central sections.

MIXTURE N°2: 30 g of /BLOND 9-tone lightening powder + 7.5 ml of /XRESCUE + 45 ml of /BLOND 30 VOL. developing cream

04

COLORING THE REMAINING PARTS

Apply color to all remaining mid-lengths and ends using Mixture N°1.

MIXTURE N°1: 50 g of /INFINITE 5-26 + 8 g of /MIX TONE Violet + 2 g of /MIX TONE Magenta + 50 ml of SUBTIL 10 VOL. oxidant.

When a YELLOW TO LIGHT YELLOW lightening base has been achieved, rinse out and wash using SUBTIL Acid pH shampoo, followed by a suitable conditioner from the BEAUTIST range.

05

RECOLORING

ON TOWEL-DRIED HAIR

Apply Mixture N°3 to pre-lightened zones.

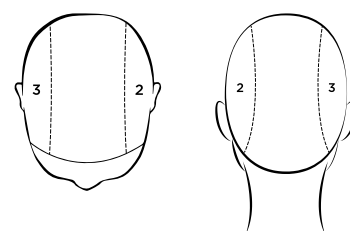
MIXTURE N°3: 30 g of SUBTIL MÈCHES Magenta + 3 g of SUBTIL MÈCHES Cassis + 46.5 ml of SUBTIL 5 VOL. oxidant

Leave on for 20 minutes (must be monitored), then rinse out and wash hair with SUBTIL Acid pH shampoo, followed by a suitable conditioner from the BEAUTIST range.

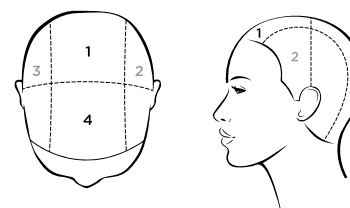
EXPERT TIPS FOR MORE SUBTLE CONTRAST

Carry out the lightening technique (Step 3) directly with the SUBTIL MÈCHES shades, replacing the oxidant with a 40 VOL.

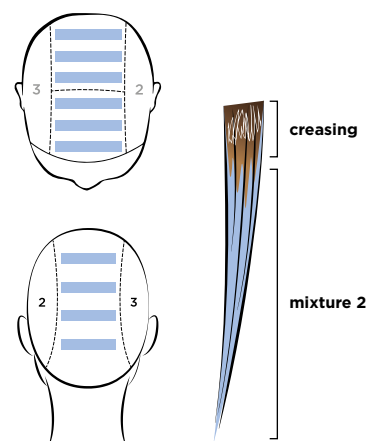
SECTIONING OFF ZONES 2 AND 3



SECTIONING OFF ZONES 1 AND 4



LIGHTENING ZONES 1 AND 4



LIGHTENING ZONES 2 AND 3



#beachyblond



#CHAMPAGNE BLOND #NECTAR BLOND #CARAMILK BLOND #BABY BLOND #LOWLIGHTHAIR :



+76 K
posts on INSTAGRAM



+7 M
hits on GOOGLE



+80 K
views on YOUTUBE



+3 M
on TIKTOK

step by step



DEPTH LEVEL OF MODEL 7
with a previous balayage on lengths and ends

01

SECTION OFF ZONES A-B-C AND D

ZONE A: Trace and separate off a triangular section starting from the temple, extending over the lower part of the crown and ending at the opposite temple.

ZONE B: Trace and separate off a triangular section starting from the temple, extending over the parietal zone, continuing across the lower part of the crown to the opposite parietal zone, with the triangle then ending at the opposite temple. This zone will be split into two.

ZONE C: On either side, trace out a vertical line starting from the middle of the ear and moving up to meet the line that separates off Zone B.

ZONE D: Split down the middle, this represents the sides and back of the head.

02

LIGHTENING AND COLORING ZONES D AND B

In each zone, trace out diagonal sections and alternate between the 1-2-3 and 2 application methods.

APPLICATION METHOD 1

Use the "hair by hair" technique using the wrapped method with Mixture N°1 and the SUBTIL Hairbrush. Then end with backcombing new growth across the rest of the section and applying a second mixture (N°3, used for the third method) on the mid-lengths and ends (protected method).

MIXTURE N°1: 30 g of /BLOND ammonia-free lightening powder + 7.5 ml of /XRESCUE + 45 ml of /BLOND 20 VOL. developing cream

APPLICATION METHOD 2

Apply the "lowlight hair" technique to strands half a centimeter thick using Mixture N°2, gently backcombing new growth using the protected method.

Then end with backcombing new growth across the rest of the section and applying a second mixture (N°3, used for the third method) on the mid-lengths and ends (protected method).

MIXTURE N°2: 33 g of /INFINITE 8-34 + 2 g of /INFINITE 7-3 + 35 ml of SUBTIL 5 VOL. oxidant

APPLICATION METHOD 3

Apply the "painting balayage" technique using Mixture N°3, gently backcombing new growth using the protected method.

MIXTURE N°3: 30 g of /BLOND ammonia-free lightening powder + 7.5 ml of /XRESCUE + 45 ml of /BLOND 30 VOL. developing cream

03

LIGHTENING ZONES C AND A

Trace out diagonal sections 2-3 cm thick and use application method 3 (described in the paragraph above).

When a VERY LIGHT YELLOW TO VERY VERY LIGHT YELLOW lightening base has been achieved, rinse out and wash using SUBTIL Acid pH shampoo, followed by a suitable conditioner from the BEAUTIST range.

04

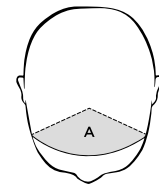
TONING THROUGHOUT HAIR

Tone all pre-lightened zones using Mixture N°4.

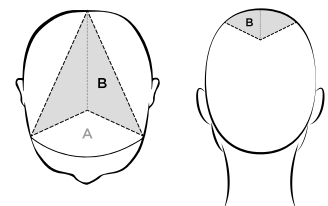
MIXTURE N°4: 24 g of /LACQUER 10-32 + 20 g of /LACQUER 9-24 + 1 g of /LACQUER 8-4 + 45 g of /LACQUER Clear + 90 ml of SUBTIL 5 VOL. oxidant

Leave on for 20 minutes (must be monitored), then rinse out and wash hair with SUBTIL Acid pH shampoo, followed by a suitable conditioner from the BEAUTIST range.

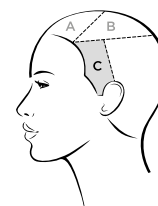
SECTION OFF ZONES A-B-C AND D



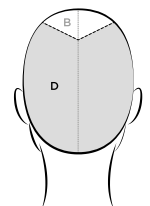
ZONE A



ZONE B

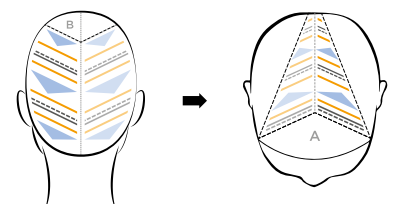


ZONE C



ZONE D

LIGHTENING AND COLORING ZONES D AND B

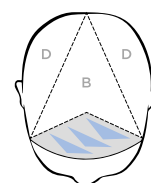


ZONE D

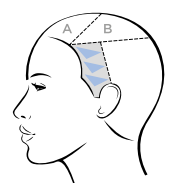
ZONE B

- Application method 1
- Application method 2
- Application method 3

LIGHTENING ZONES A AND C



ZONE A



ZONE C